



3 Bedrooms



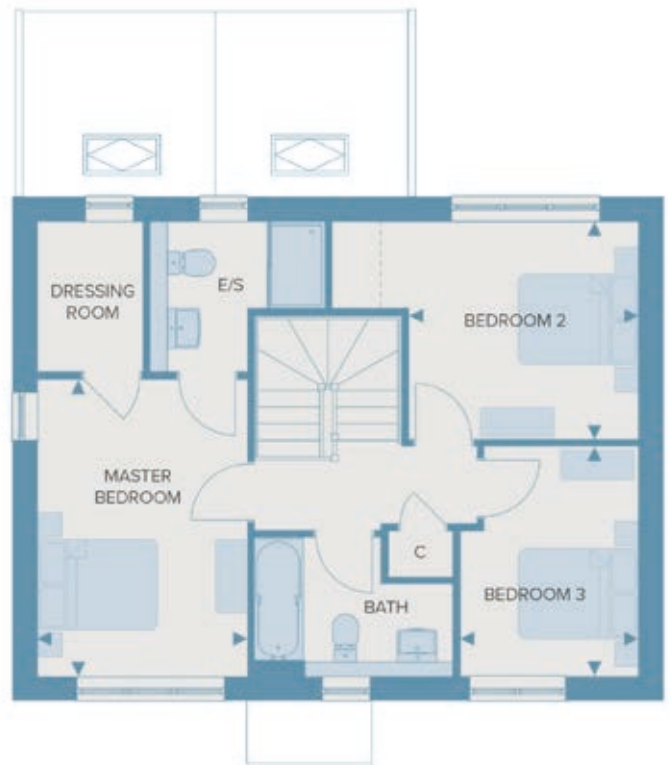
2 bathroom



Garage to
specific plots



2 Allocated
parking spaces



Total internal area 116m² 1248sq.ft

Ground Floor

| | | |
|----------------|---------------|---------------|
| Living Room | 3.04m x 6.27m | 10'0" x 20'7" |
| Kitchen/Dining | 2.86m x 6.27m | 9'5" x 20'7" |
| Cloakroom | 1.05m x 1.54m | 3'5" x 5'1" |
| Family Room | 4.47m x 2.48m | 14'8" x 8'1" |

First Floor

| | | |
|---------------|---------------|---------------|
| Bedroom 1 | 2.90m x 4.09m | 9'6" x 13'5" |
| Bedroom 2 | 3.17m x 3.00m | 10'5" x 9'10" |
| Bedroom 3 | 2.46m x 3.17m | 8'1" x 10'5" |
| Ensuite | 2.16m x 2.08m | 7'1" x 6'0" |
| Bathroom | 2.74m x 1.70m | 9'0" x 5'7" |
| Dressing Room | 1.46m x 2.08m | 4'9" x 6'10" |

Made for life.