

HANBOROUGH GATE

Long Hanborough, Oxfordshire



The Guildford

Plots 130, 137 & 146

Available semi-detached or terraced, this double-fronted, three bedroom family home benefits from built-in storage in every bedroom and a useful utility room.

PYE
homes
BLENHEIM



3 Bedrooms



2 Bathrooms



Garage to
Specific Plots

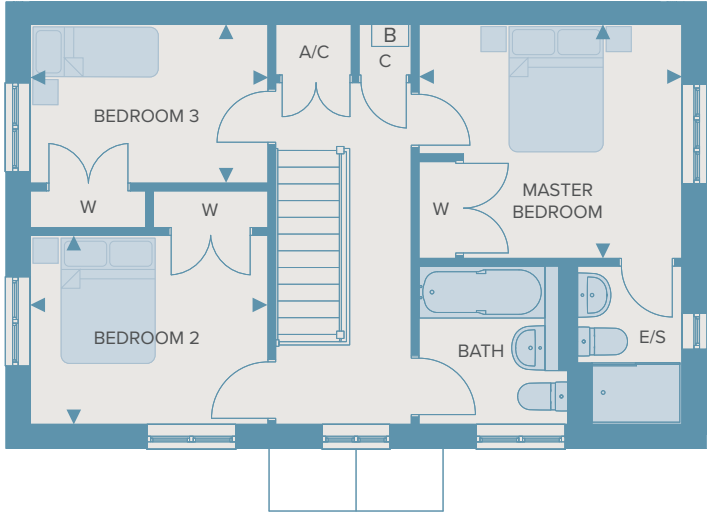


Allocated
Parking



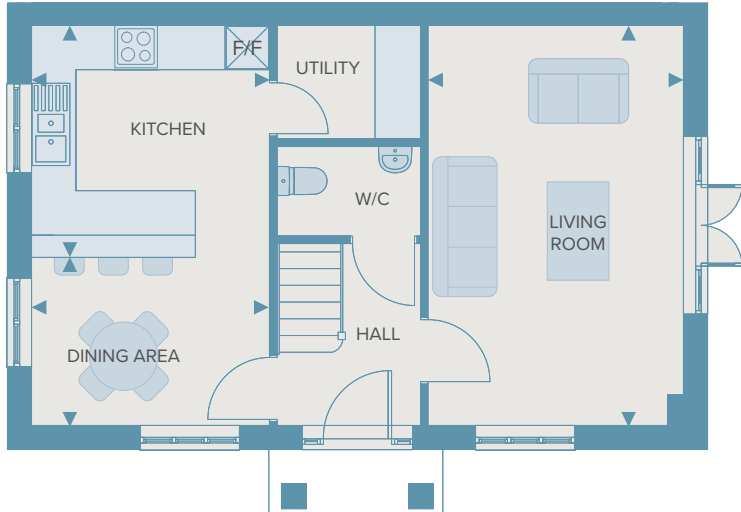
Shared
Ownership
Available

Total internal area: 95.03sq. m. 1022.89sq. ft.



First Floor

Master Bedroom	3.50m x 3.20m	13'9" x 9'5"
Bedroom 2	3.26m x 2.91m	10'8" x 9'6"
Bedroom 3/Study	2.50m x 3.20m	10'8" x 6'8"



Ground Floor

Living Room	5.35m x 3.37m	17'7" x 11'1"
Kitchen	3.15m x 3.10m	10'4" x 7'8"
Dining Area	3.15m x 2.20m	10'4" x 9'10"

Made for life.



■ Indicates Plot Location and garage position (if applicable)

Computer generated images are for illustrative purposes only. Exterior and roof materials vary. All dimensions are approximate. Specification and home layout may vary. Siteplan is not to scale and is indicative only.



We like to think you can tell a Pye Home from the moment we start building, when you see the pride we take in a well-swept path.

Right through to when we proudly open the door and show you around, ready for you to begin life in your new, finished home.

Made for life.

Notes:

PYE
h o m e s
BLENHEIM

Langford Locks | Kidlington | Oxfordshire OX5 1HZ

01993 870730

hanboroughgate@pyehomes.co.uk

pyehomes.co.uk